

# **PARTS MANUAL**

**Models**

**PTD310T**

**Pump**

PUB-PP  
Rev. 10/07

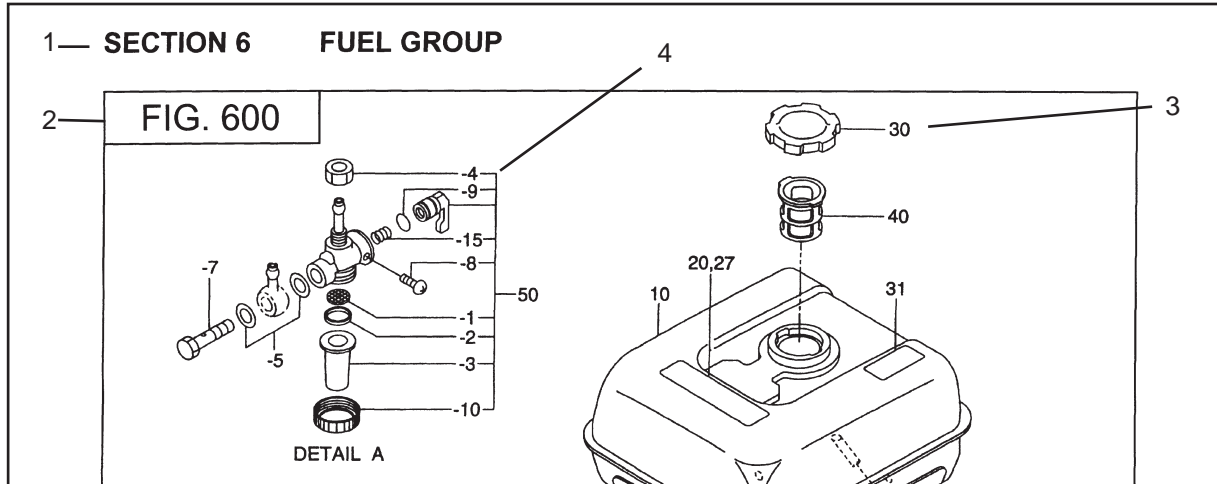
# **Robin America, Inc.**

940 Lively Blvd. • Wood Dale, IL 60191 • Phone: 630-350-8200 • Fax: 630-350-8212  
e-mail: [sales@robinamerica.com](mailto:sales@robinamerica.com) • [www.robinamerica.com](http://www.robinamerica.com)

© Copyright 2007 Robin America, Inc.



# MANUAL LAYOUT



REF.	PART NO.	DESCRIPTION	QTY.	REMARKS	FROM-TO	FIG.
10	267-60103-01	FUEL TANK CP	1	YD, YS TYPE, BLACK		600
	267-60101-01	FUEL TANK CP	1	YELLOW		600
27	073-20039-00	LABEL, WARNING	1	YD, YS TYPE		600
30	043-04300-15	FUEL TANK CAP CP	1			600
31	267-95201-03	LABEL, EMISSION	1	YD, YS TYPE		600
40	064-13600-10	FUEL FILTER	1			600
50	064-20021-01	FUEL STRAINER AY	1			600
-1	064-20002-20	FILTER	1			600
-2	064-20002-30	GASKET	1			600
-3	064-20019-10	CUP	1			600

1. SECTION NAME Parts are broadly classified according to their functions. Refer to the Group Index (table of contents) for respective section name.
2. FIG. No. The FIG. number indexes the reference and part numbers to the illustration. Figure numbers that vary only in the tens place (i.e.: 700 and 710) are in a group of the same section (i.e.:Electrical Device Group).
3. REF. No . The Reference number identifies the part illustration with the corresponding part number in the part list.
4. SUBASSEMBLY SUBASSEMBLY parts of part assembly are listed below the assembly part. The subassembly part reference number is indicated by the number led by "-" such as "-1", "-2".
5. PART NUMBER It is the number assigned for sales unit. Use the PART No. when making an order.
6. DESCRIPTION It is designation of the part.
7. QTY. Quantity of each part used for each product.
8. REMARKS This gives a distinctive feature and/or a supplementary comment for the type, the specification, and the part concerned. It also shows part number(s) interchangeable for the part.
9. FROM-TO This section shows the CODE No. to indicate the history of progress in which improved parts have been introduced in the product. The FROM-TO CODE No. helps to identify PART No. being employed in the product concerned. See the examples below:
  - The part is used in the product irrespective of CODE No.
  - 2101- The part is used in the products with CODE No. of 2101 and after this number.
  - 2100 The part is used in the products with CODE No. of 2100 and before this number.

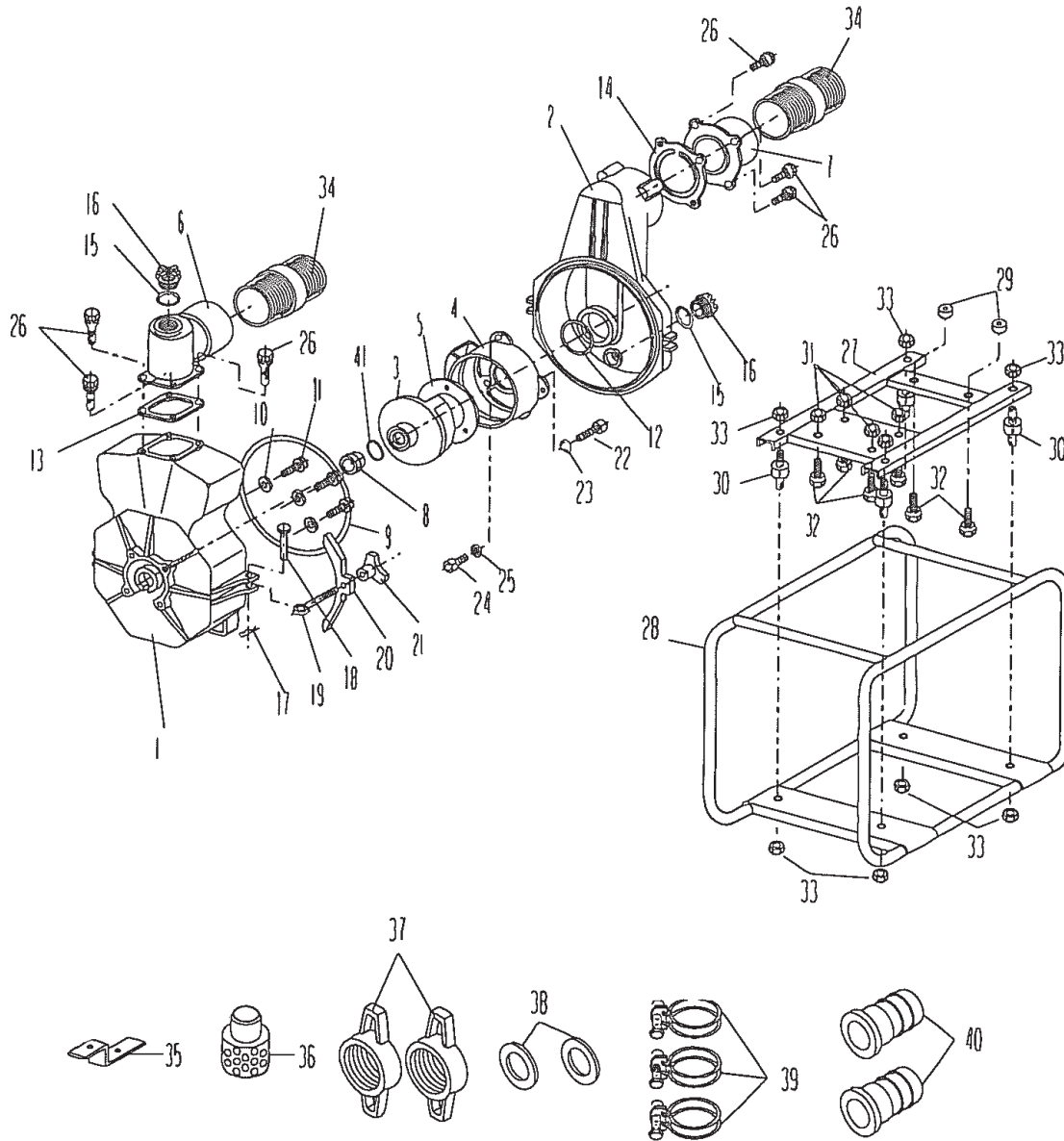
# GROUP INDEX

Group Name	Page
CRANKCASE GROUP .....	6
CRANKSHAFT GROUP .....	8
INTAKE and EXHAUST GROUP .....	10
GOVERNOR GROUP .....	18
COOLING and STARTING GROUP .....	22
FUEL, LUBRICANT GROUP .....	26
CARBURETOR GROUP .....	28
ELECTRIC DEVICE GROUP .....	32
ACCESSORY GROUP .....	38

INDEX OF DESCRIPTION SYMBOLS			
SYMBOL	DESCRIPTION	SYMBOL	DESCRIPTION
AY .....	ASSEMBLY	P= .....	PITCH (in mm)
CP .....	COMPLETE	P.T.O. (PTO) .....	POWER TAKE OFF
EX .....	EXPORT (from Japan)	REF .....	REFERENCE
FIG .....	FIGURE	R.H. (RH) .....	RIGHT HAND SIDE
FR .....	FRONT	RR .....	REAR
" .....	INCH	STD. ....	STANDARD
INCL. ....	INCLUDE	SW .....	SWITCH
-L .....	LITER	T= .....	THICKNESS (in mm)
L= .....	LENGTH (in. mm)	UN .....	UNIT
L.H. (LH) .....	LEFT-HAND SIDE	U.S. ....	UNDER SIZE
MECH .....	MECHANICAL	~V .....	VOLTAGE
NO (NON) .....	NONE	~W .....	WATT
OPT .....	OPTIONAL	W/ .....	WITH
O.S. ....	OVER SIZE	W/O .....	WITHOUT

SECTION 1 PUMP GROUP

FIG. 100

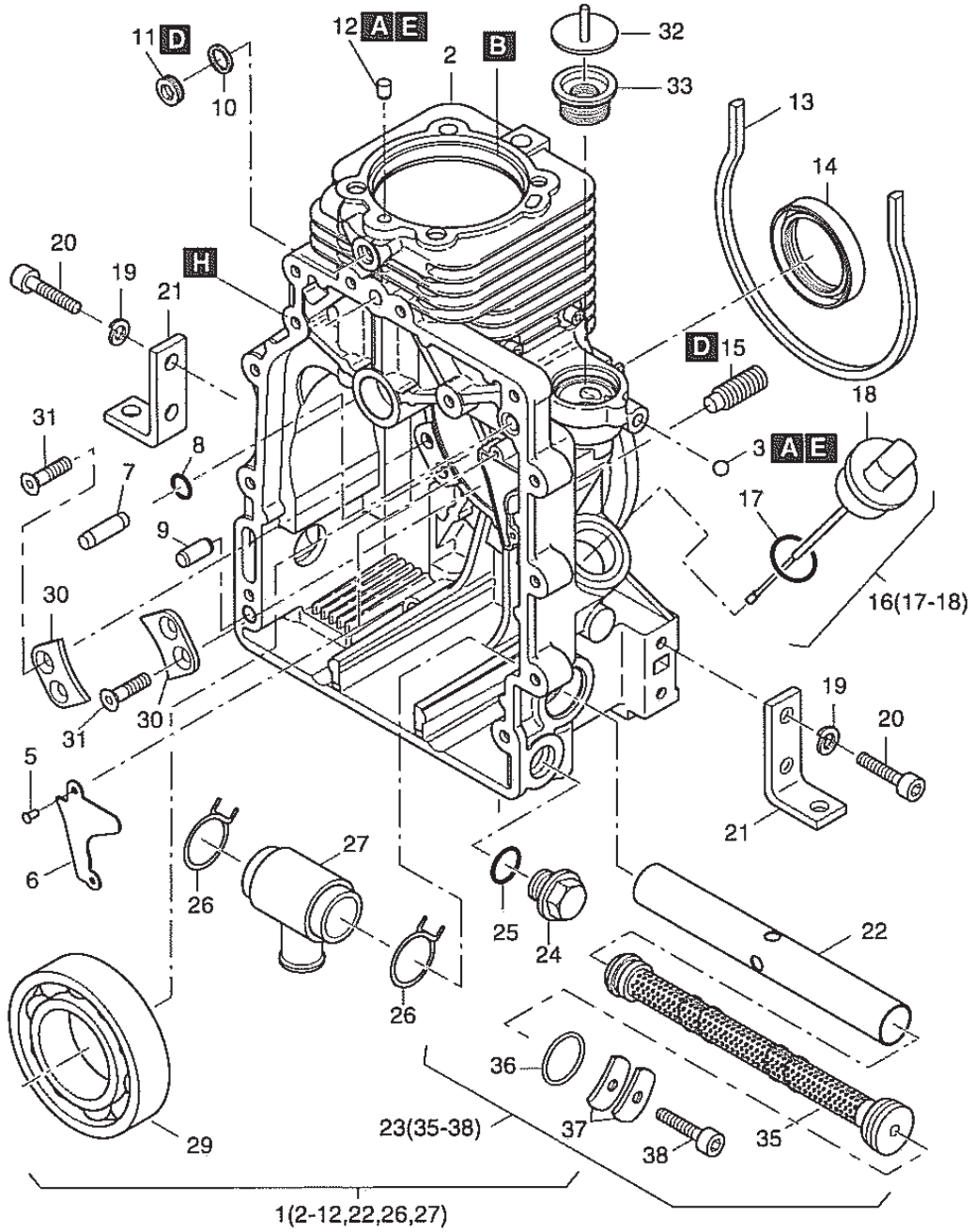


## SECTION 1 PUMP GROUP

REF.	PART NO.	DESCRIPTION	QTY.	REMARKS	FROM-TO	FIG.
1	481-00001-55	CASING COVER	1			100
2	481-00000-68	CASING	1			100
3	481-00001-04	IMPELLER	1			100
4	481-00001-03	INNER CASING	1			100
5	481-00000-64	LINER	1			100
6	481-00000-72	DELIVERY FLANGE	1			100
7	481-00000-71	SUCTION FLANGE	1			100
8	480-08210-08	MECHANICAL SEAL	1			100
9	480-08210-17	PACKING, CASING	1			100
1	481-00001-43	AL WASHER	4			100
11	481-00001-44	FLANGE BOLT	4			100
12	480-08210-20	O RING	1			100
13	480-08010-20	PACKING BEND	1			100
14	481-00000-73	CHECK VALVE	1			100
15	480-08210-18	O RING	2			100
16	480-08210-12	PLUG	2			100
17	480-08210-34	SNAP PIN	2			100
18	480-08210-14	RIVET	2			100
19	480-08210-13	COVER BOLT	2			100
20	480-08210-16	CASING, COVER HOLDER	2			100
21	480-08210-15	KNOB	2			100
22	481-00001-61	HEX SOCKET HEAD BOLT	3			100
23	481-00001-62	SPRING WASHER	3			100
24	481-00001-63	HEX SOCKET HEAD BOLT	3			100
25	481-00001-64	SPRING WASHER	3			100
26	480-05010-03	HEX BOLT	7			100
27	481-30004-01	BASE, YELLOW	1			100
28	481-30005-01	FRAME, YELLOW	1			100
29	481-00002-00	SPACER	2			100
30	481-00002-01	ANTI VIBRATION RUBBER	4			100
31	480-05010-24	FLANGE NUT	4			100
32	480-08010-14	HEX BOLT	6			100
33	480-10010-24	SPRING NUT	8			100
34	481-00001-67	NIPPLE	2			100
35	480-05210-35	MULTI PRUPOSE TOOL	1			100
36	481-30006-01	STRAINER	1			100
37	480-08210-23	HOSE COUPLING HANDLE	2			100
38	480-08010-17	PACKING , COUPLING	2			100
39	480-08010-28	HOSE BAND	3			100
40	480-08210-22	HOSE COUPLING	2			100
41	480-10010-43	SHIM	1	Select 1		100
41	480-10014-44	SHIM	1	Select 1		100
41	480-10010-45	SHIM	1	Select 1		100

SECTION 5 CRANKCASE GROUP

FIG. 500





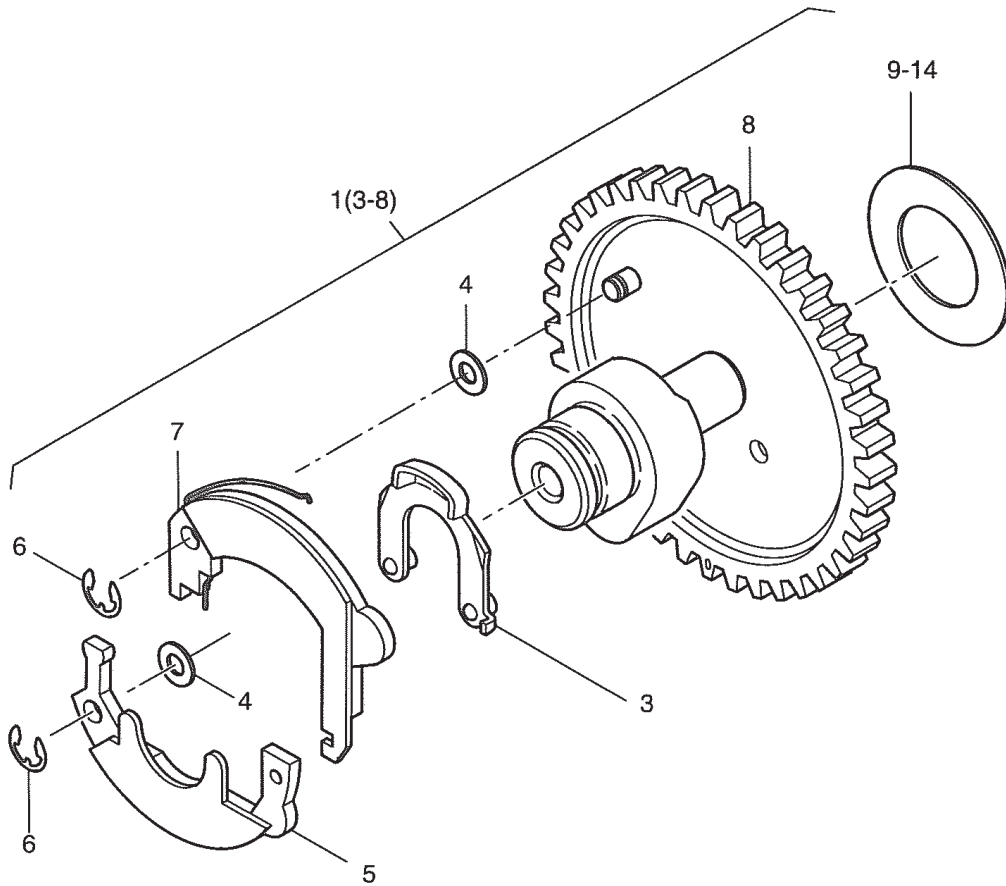






SECTION 7 CAMSHAFT GROUP

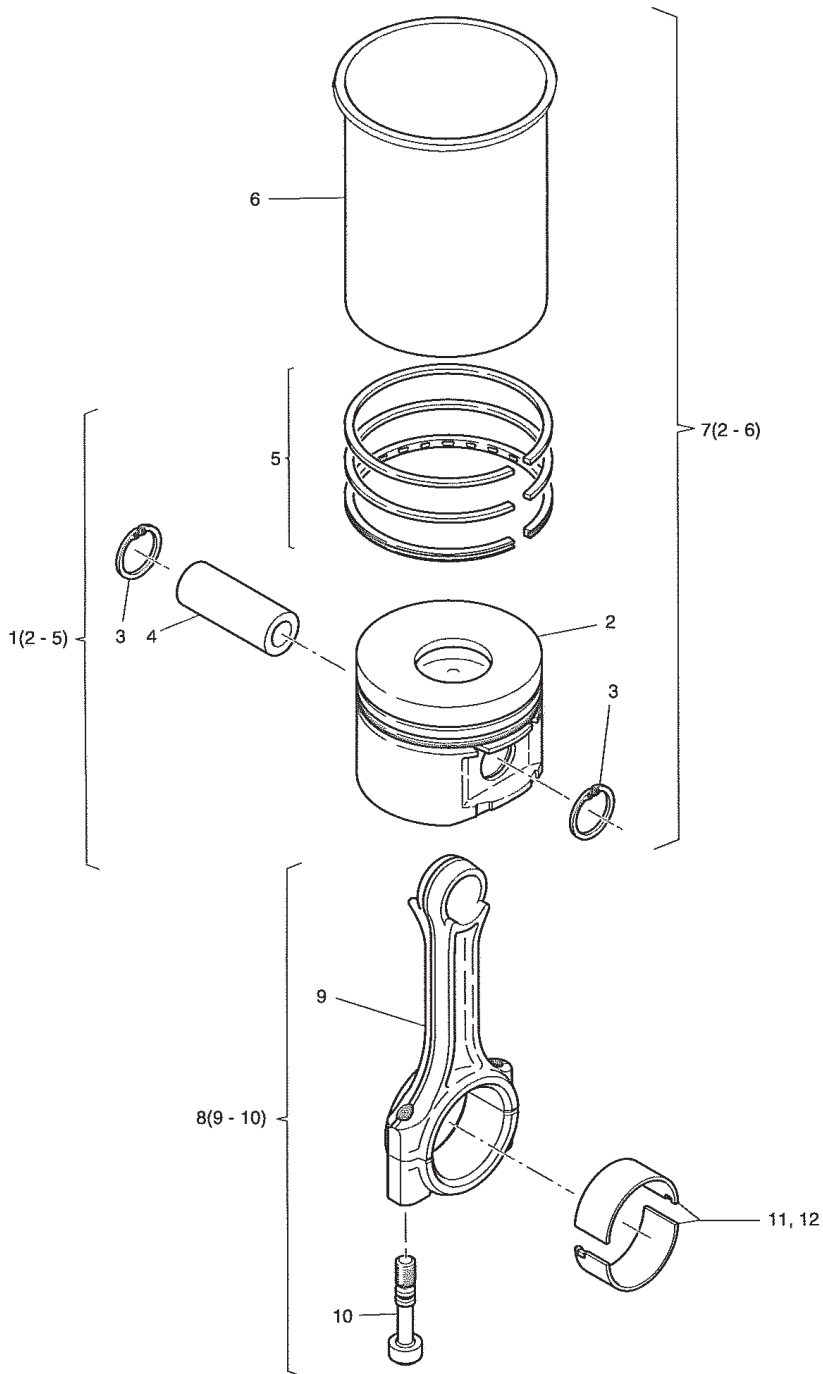
FIG. 700





SECTION 8 PISTON GROUP

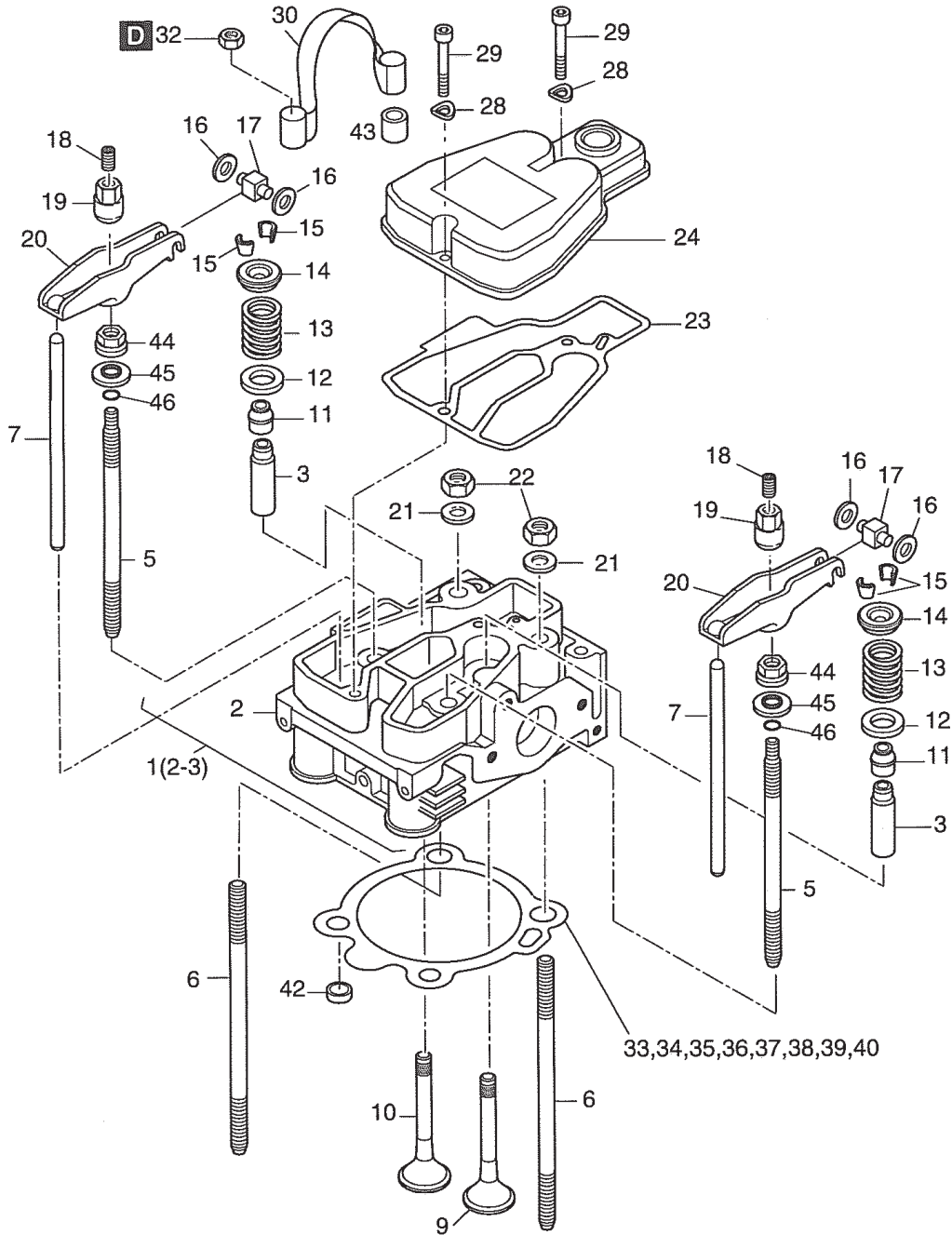
FIG. 800





SECTION 9 CYLINDER HEAD GROUP

FIG. 900

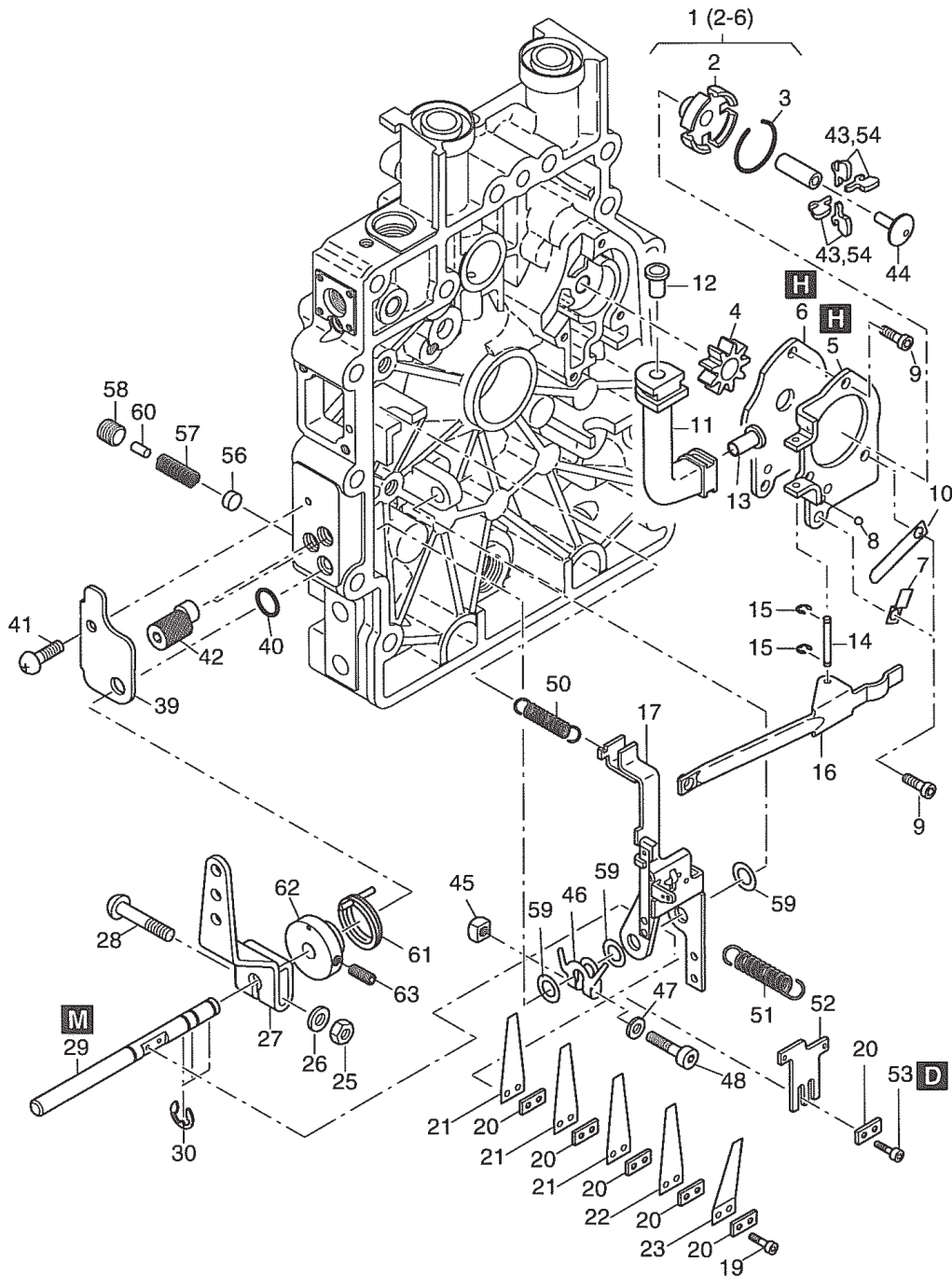






SECTION 10 OIL PUMP, SPEED CONTROL GROUP

FIG.1000

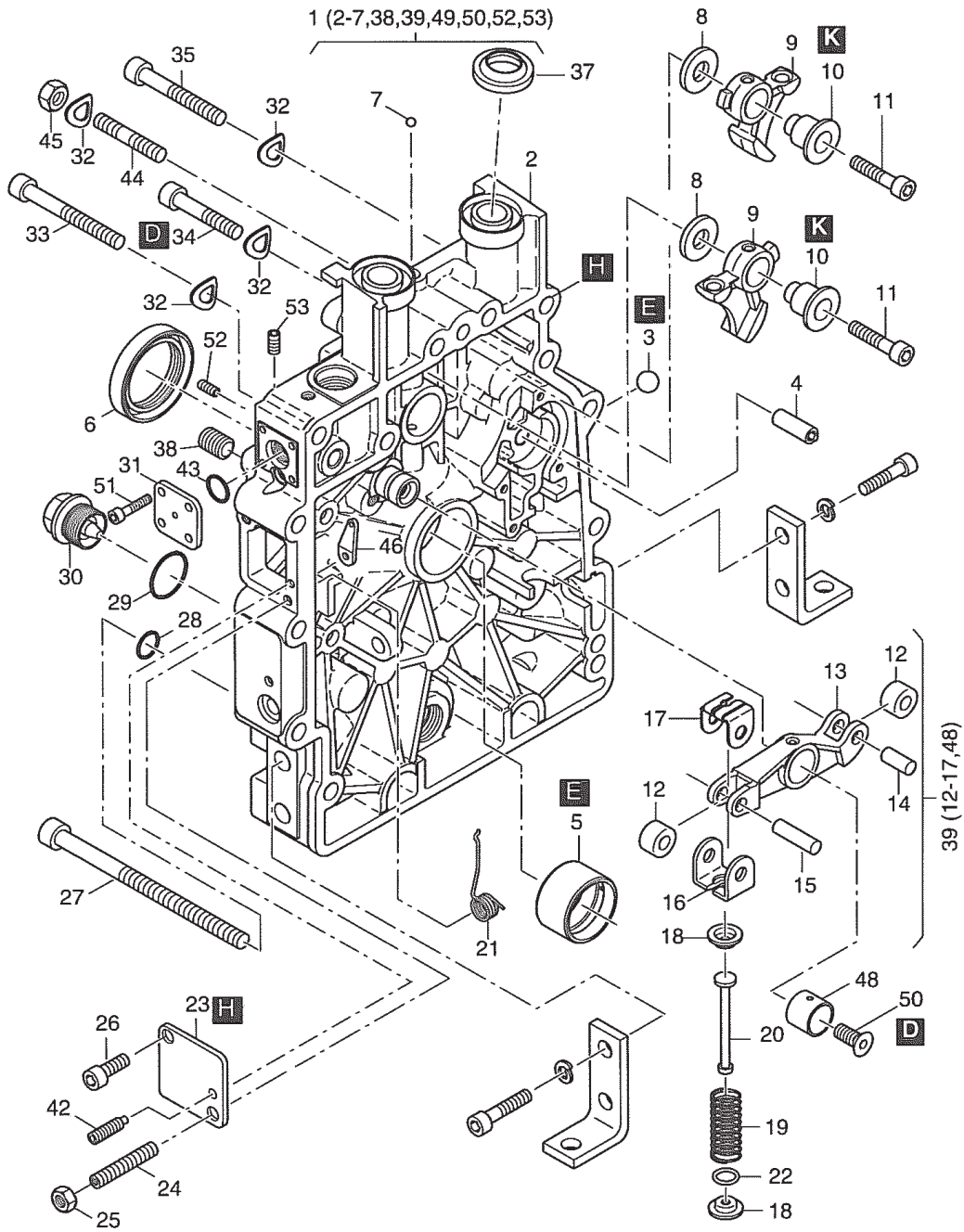


## SECTION 10 OIL PUMP, SPEED CONTROL GROUP

REF.	PART NO.	DESCRIPTION	QTY.	REMARKS	FROM-TO	FIG.
1	DH0-15302-20		1			1000
3	DH0-42109-10		1			1000
7	DH0-50971-00	RETAINING STRAP	1			1000
8	DH5-04479-00	BALL 3,5MM	1			1000
9	DH5-04294-00	ALL.SCR. M 5X 12	4			1000
10	DH0-50973-00	FLAT SPRING 0,4	1			1000
11	DH0-41029-00	TUBE OIL SUCTION	1			1000
12	DH5-04474-00	TUBE RIVET A8X0,5X12	1			1000
13	DH5-04475-00	TUBE RIVET 10X12	1			1000
14	DH0-50786-00	SHAFT	1			1000
15	DH5-04348-00	CIRCLIP 1,9	2			1000
16	DH0-50794-01	LEVER	1			1000
17	DH0-15304-01		1			1000
19	DH5-04350-00	ALL.SCR. M 3 X 12	2			1000
20	DH0-50798-00	INTERMED. PLATE	1-5			1000
21	DH0-51316-00	GOVERNOR SPRING 0,2	1-3			1000
22	DH0-50789-00	GOVERNOR SPRING 0,3	1			1000
23	DH0-51486-00	STOP SPRING	1			1000
25	DH5-03465-00	HEXAGON NUT M6	1			1000
26	DH5-01445-00	FLAT WASHER 6,4	1			1000
27	DH0-40956-00		1			1000
28	DH0-39273-01	SCREW M6X32	1			1000
29	DH0-50793-01	SHAFT	1			1000
30	DH5-00927-00	CIRCLIP 7	3			1000
39	DH0-51784-00	PLATE	1			1000
40	DH4-00224-01	O-RING 8 X 2 GRAY	1			1000
41	DH5-04923-00	FILL.HEAD SCR.M5X12	1			1000
42	DH0-51788-10	ECCENTRIC SCREW	2			1000
43	DH0-50796-11	CENTRIFUGAL WEIGHT	0-4			1000
44	DH0-50785-02	GOVERNOR SLEEVE	1			1000
45	DH5-04227-00	SQUARE NUT M 5	1			1000
46	DH0-51785-00	STOP	1			1000
47	DH5-02163-00	WASHER 5,3	1			1000
48	DH5-04922-00	ALL.SCR. M 5X 25	1			1000
50	DH5-05634-00		1			1000
51	DH0-51309-10		1			1000
52	DH0-51308-00	STOP	1			1000
53	DH5-04653-00	ALL.SCR.M 3X 8	2			1000
54	DH0-51602-11	CENTRIFUGAL WEIGHT	0-4			1000
56	DH0-51517-00	PLUG	1			1000
57	DH5-04887-00	PRESSURE SPRING	1			1000
58	DH5-04757-00	GRUB SCREW M10X10	1			1000
59	DH5-04224-00	SHIM 8X14X1	3			1000
60	DH5-00579-00	CYL.PIN 4 M6X 8	1			1000
61	DH0-51791-00	SPRING	1			1000
62	DH0-51790-00	BUSH	1			1000
63	DH5-04006-00	GRUB SCREW M 5X10	1			1000

SECTION 11 TIMING COVER GROUP

FIG. 1100

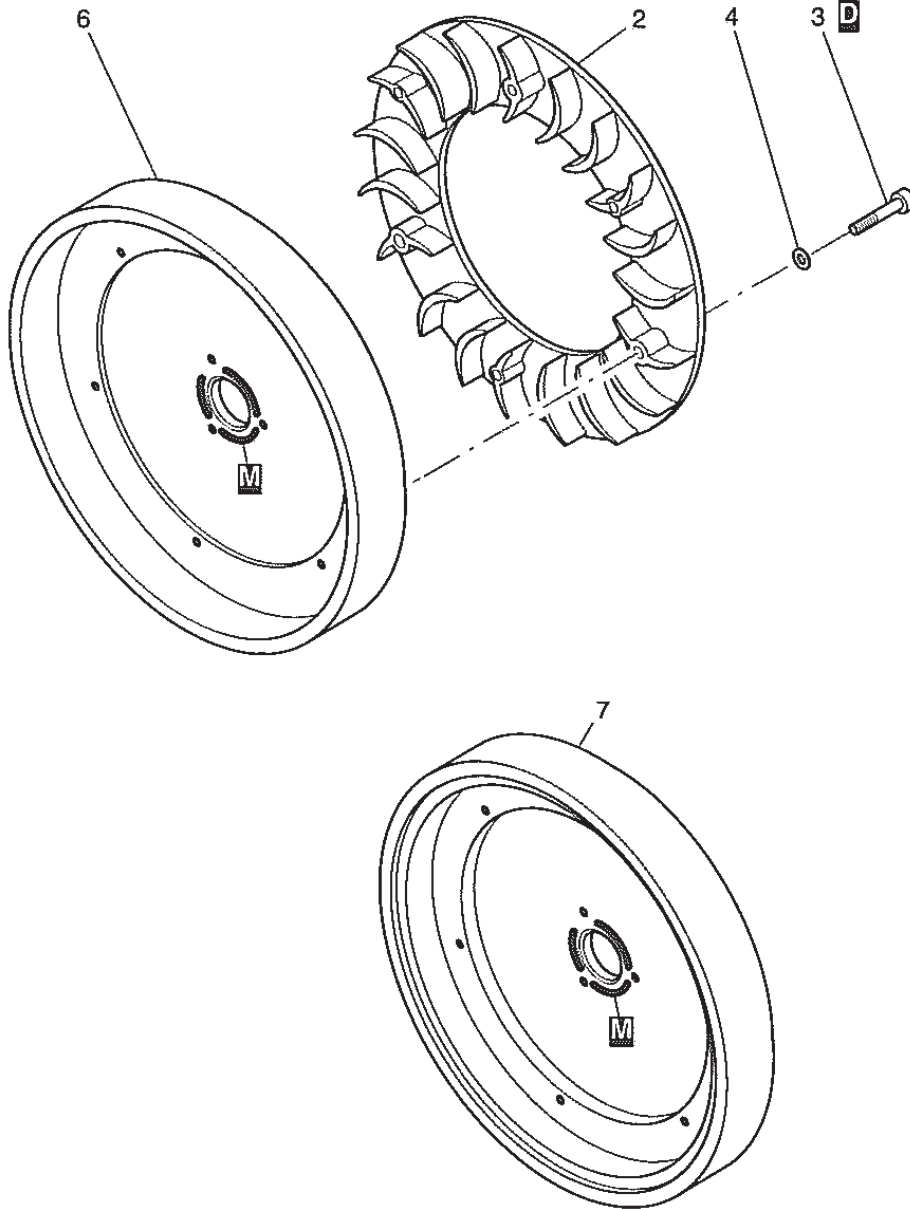


24



SECTION 12 BLOWER, FLYWHEEL GROUP

FIG. 1200







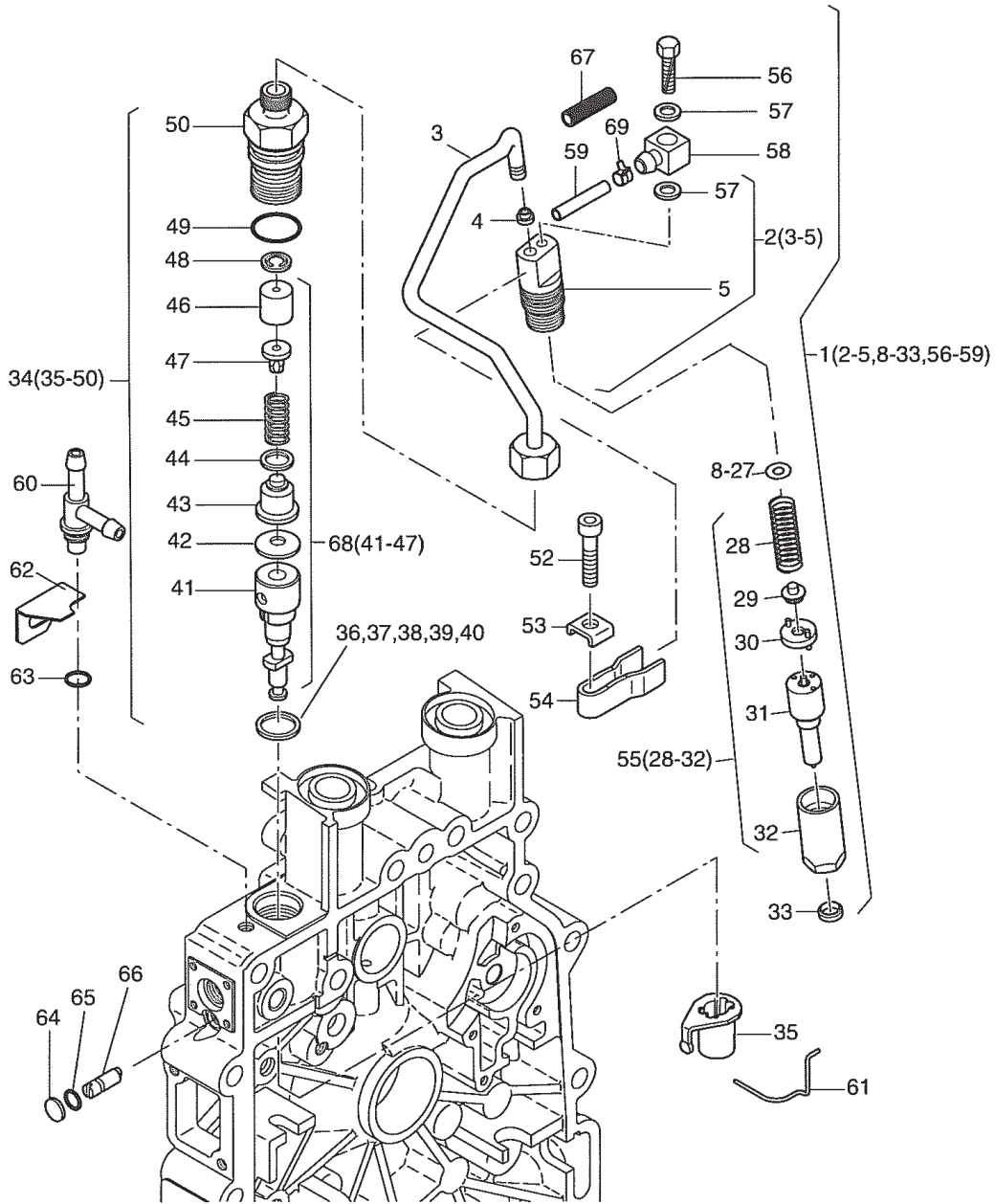


## SECTION 13 INJECTION EQUIPMENT GROUP

REF.	PART NO.	DESCRIPTION	QTY.	REMARKS	FROM-TO	FIG.
1	DH0-13896-00	INJECTOR CPL EPA2	1			1300
2	DH0-15828-00	NOZZLE HOLD. PIPE	1			1300
4	DH0-50706-01	SEALING CONE	1			1300
8	DH5-04364-00	SHIM 1,0	1			1300
9	DH5-04365-00	SHIM 1,04	1			1300
10	DH5-04366-00	SHIM 1,10	1			1300
11	DH5-04367-00	SHIM 1,14	1			1300
12	DH5-04368-00	SHIM 1,20	1			1300
13	DH5-04369-00	SHIM 1,24	1			1300
14	DH5-04370-00	SHIM 1,30	1			1300
15	DH5-04371-00	SHIM 1,34	1			1300
16	DH5-04372-00	SHIM 1,40	1			1300
17	DH5-04373-00	SHIM 1,44	1			1300
18	DH5-04374-00	SHIM 1,50	1			1300
19	DH5-04375-00	SHIM 1,54	1			1300
20	DH5-04376-00	SHIM 1,60	1			1300
21	DH5-04377-00	SHIM 1,64	1			1300
22	DH5-04378-00	SHIM 1,70	1			1300
23	DH5-04379-00	SHIM 1,74	1			1300
24	DH5-04380-00	SHIM 1,80	1			1300
25	DH5-04381-00	SHIM 1,84	1			1300
26	DH5-04382-00	SHIM 1,90	1			1300
27	DH5-04383-00	SHIM 1,94	1			1300
31	DH5-05667-00	NOZZLE EPA2	1			1300
33	DH0-50705-00	JOINT WASH.F.INJECT	1			1300
34	DH0-15829-10	INJECTION PUMP EPA2	1			1300
35	DH0-13308-01	CONTROL SLEEVE	1			1300
38	DH0-40965-00	SHIM 14X18X0,4	1			1300
39	DH0-40966-00	SHIM 14X18X0,5	1			1300
40	DH0-40967-00	SHIM 14X18X0,6	1			1300
42	DH0-41652-00	CON.SPR.WASHER 8	1			1300
44	DH5-04769-00	JOINT WASHER	1			1300
48	DH0-51808-00	VALVE PLATE	1			1300
49	DH5-04892-00	O-RING 17 X 2	1			1300
50	DH0-51811-00	DELIV.VALVE HOLDER	1			1300
52	DH5-03239-00	ALL.SCR.M 6X 30	1			1300
53	DH0-50893-00	RETAINING YOKE	1			1300
54	DH0-50567-00	FORK F. INJECTOR	1			1300
56	DH5-04645-00	HEX SCREW AM 4 X 16	1			1300
57	DH5-01108-00	JOINT A 4X8	2			1300
58	DH0-51290-00	CONNECTING NIPPLE	1			1300
59	DH0-52150-00	HOSE 2,5X195	1			1300
60	DH0-17568-00	NIPPLE	1			1300
61	DH0-41618-00	HOLDING SPRING	1			1300
62	DH0-51831-00	SUPPORT	1			1300
63	DH5-01543-00	O-RING 7,5X10,5X1,5	1			1300

SECTION 13 INJECTION EQUIPMENT GROUP

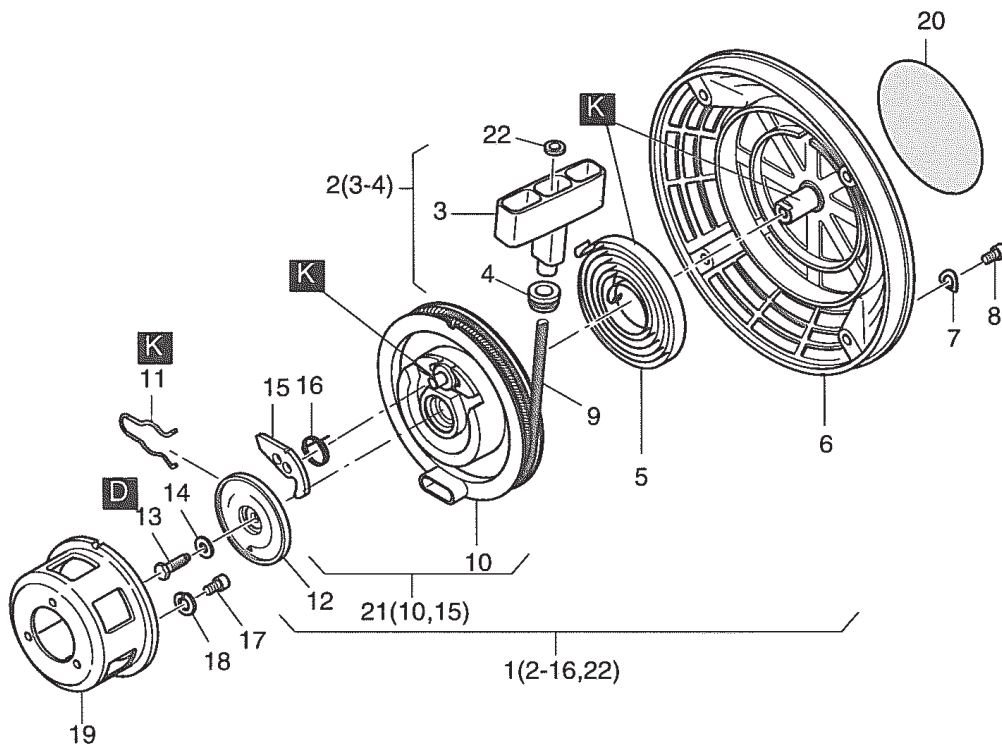
FIG. 1300





SECTION 14 RECOIL STARTER GROUP

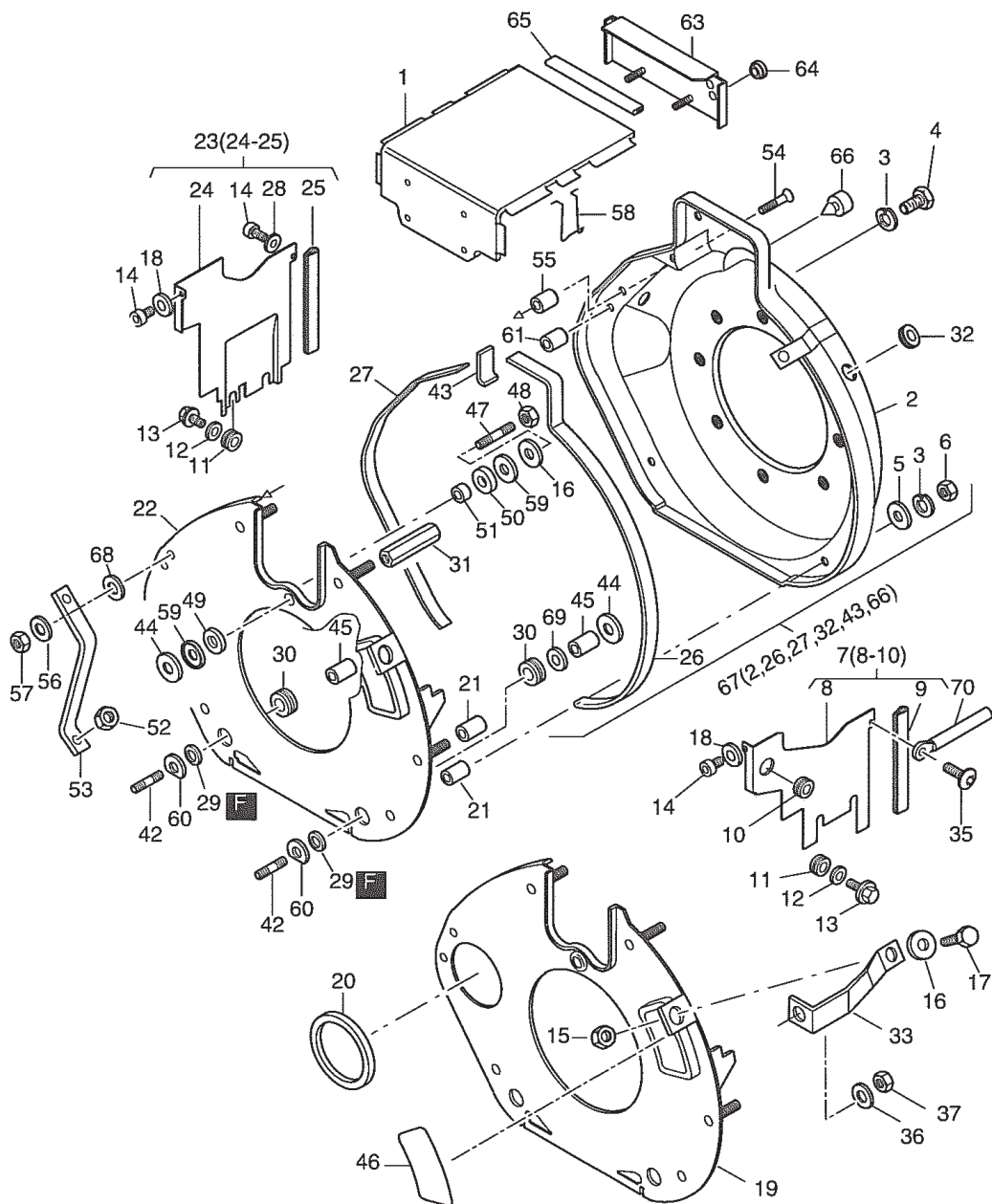
FIG. 1400





# SECTION 15 AIR DUCTING GROUP

## FIG. 1500

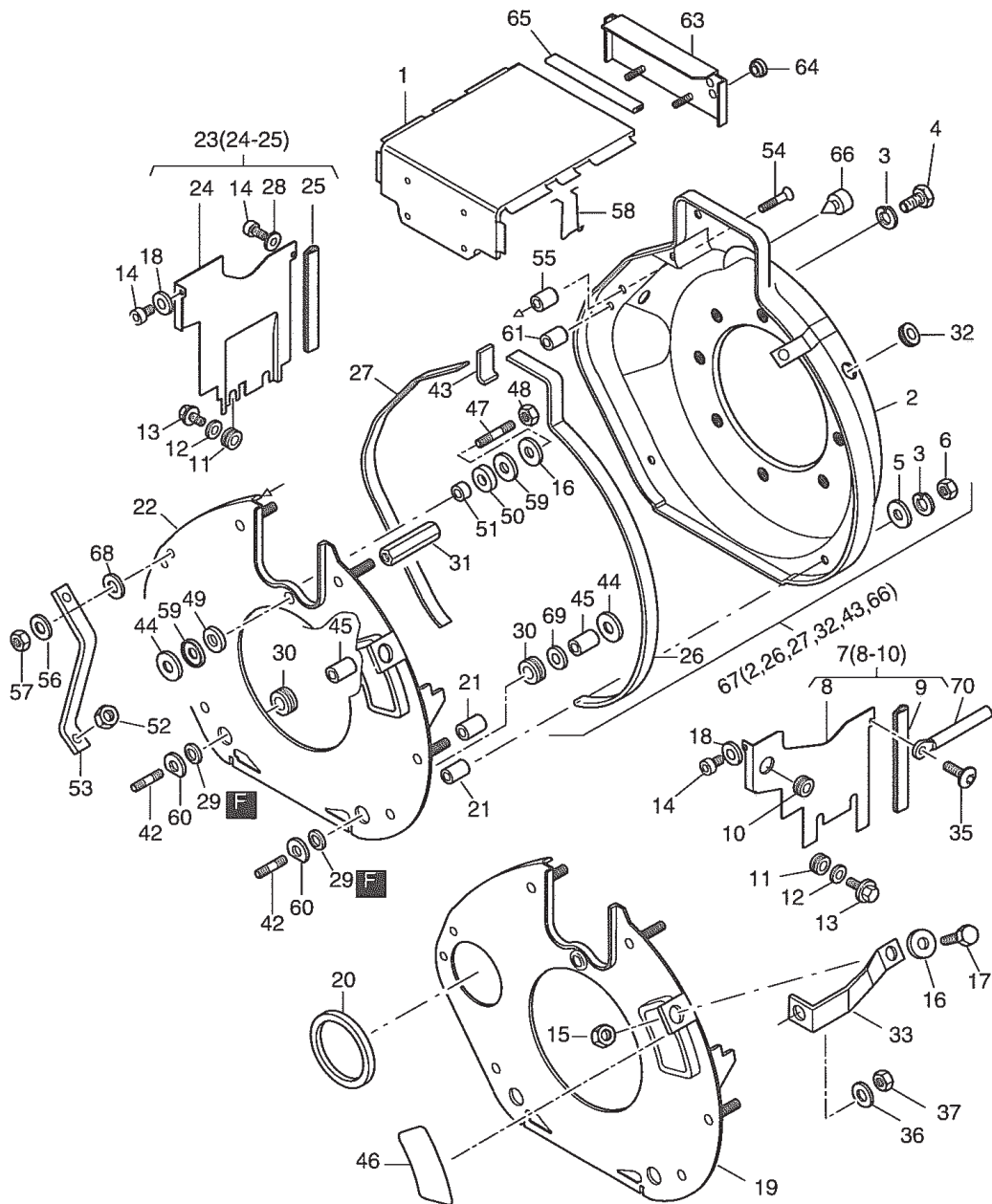


## SECTION 15 AIR DUCTING GROUP

REF.	PART NO.	DESCRIPTION	QTY.	REMARKS	FROM-TO	FIG.
1	DH0-18528-00		1			1500
3	DH5-01709-00	SPRING WASHER 6	7			1500
4	DH5-01463-00	HEX SCREW M 6X 18	1			1500
5	DH5-01200-00	DISC A 6,4	2			1500
6	DH5-01444-00	HEXAGON NUT M 6	6			1500
7	DH0-13263-00	COOLING AIR DUCTING	1			1500
9	DH0-51289-00	SEALING STRIP 80MM	1			1500
10	DH5-03348-00	RUBBER SLEEVE	1			1500
11	DH5-01638-01	RUBBER SLEEVE	3			1500
12	DH5-04416-00	WASHER 4,3	3			1500
13	DH5-04454-01	FILL.HEAD SCR.M4X10	3			1500
14	DH5-05281-00	ALL.SCR. M 6X 16	3			1500
15	DH5-01444-00	HEXAGON NUT M 6	1			1500
16	DH5-01143-00	DISC 6,4	2			1500
17	DH5-01771-00	HEX SCREW M 6X 16	1			1500
18	DH5-01445-00	FLAT WASHER 6,4	2			1500
19	DH0-13268-10	PARTING SHEET	1			1500
20	DH0-40995-00	SEALING RING	1			1500
21	DH0-51975-00	BUSH 6,5X12X20	4			1500
22	DH0-13267-10	PARTING SHEET	1			1500
23	DH0-13262-00	COOLING AIR DUCT.	1			1500
25	DH0-41115-00	SEALING STRIP 119MM	1			1500
26	DH0-51081-00	SEALING STRIP495MM	1			1500
27	DH0-41246-00	SEALING STRIP 388MM	1			1500
28	DH0-40606-00	WASHER 6,4X16X1,5	1			1500
29	DH0-35755-00	RUBBER SEAL RING	2			1500
30	DH0-13783-00	SPACER BUSH	2			1500
31	DH0-51981-00	SPACER	1			1500
32	DH5-04533-00	RUBBER SLEEVE	1			1500
33	DH0-15996-10	SUPPORT	1			1500
35	DH5-04950-00	SCREW M6X12	1			1500
36	DH5-00951-00	SPRING WASHER A 8	1			1500
37	DH5-03447-00	HEXAGON NUT M 8	1			1500
42	DH5-04581-00	STUD M 6 X45	2			1500
43	DH0-51982-00	SEALING STRIP 48	1			1500
44	DH0-40420-00	WASHER 6,5X22,5X1	3			1500
45	DH0-40984-00	SPAC.TUBE 7X12X16,3	2			1500
46	DH0-42150-00		1			1500
47	DH5-04644-01	STUD M 6FO X35	1			1500
48	DH5-03283-00	HEXAGON NUT VM6	1			1500
49	DH0-51338-00	RUBBER SEAL RING	1			1500
50	DH0-51339-00	RUBBER SEAL RING	1			1500
51	DH0-51327-00	BUSH 6,5X17X11,5	1			1500
52	DH5-01480-00	HEXAGON NUT M 8	1			1500
53	DH0-51330-01	SUPPORT F.FUEL TANK	1			1500
54	DH5-04450-00	CTR.SUNK SCR.M6X35	1			1500

SECTION 15 AIR DUCTING GROUP

FIG. 1500

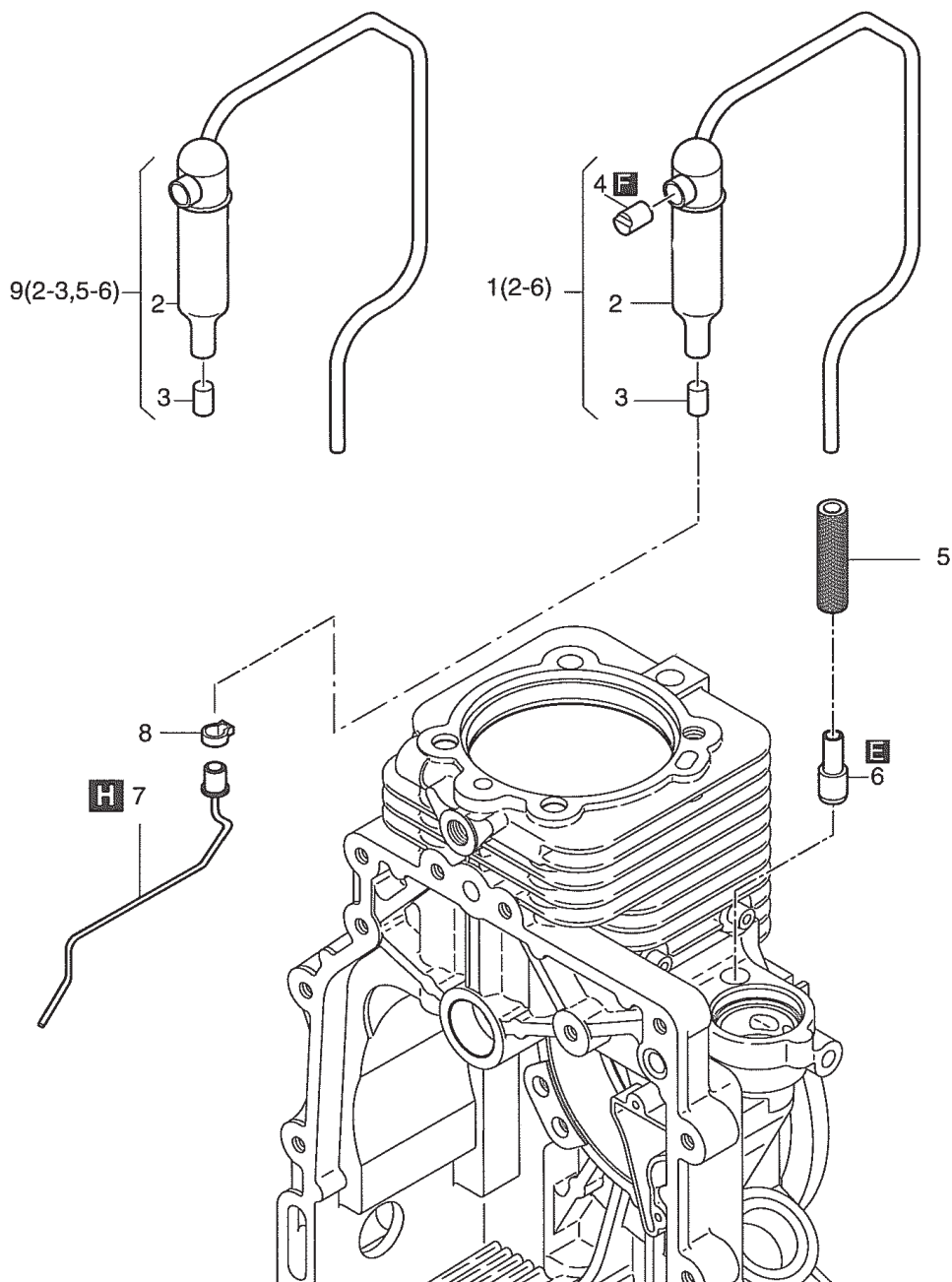






SECTION 16 BREATHING GROUP

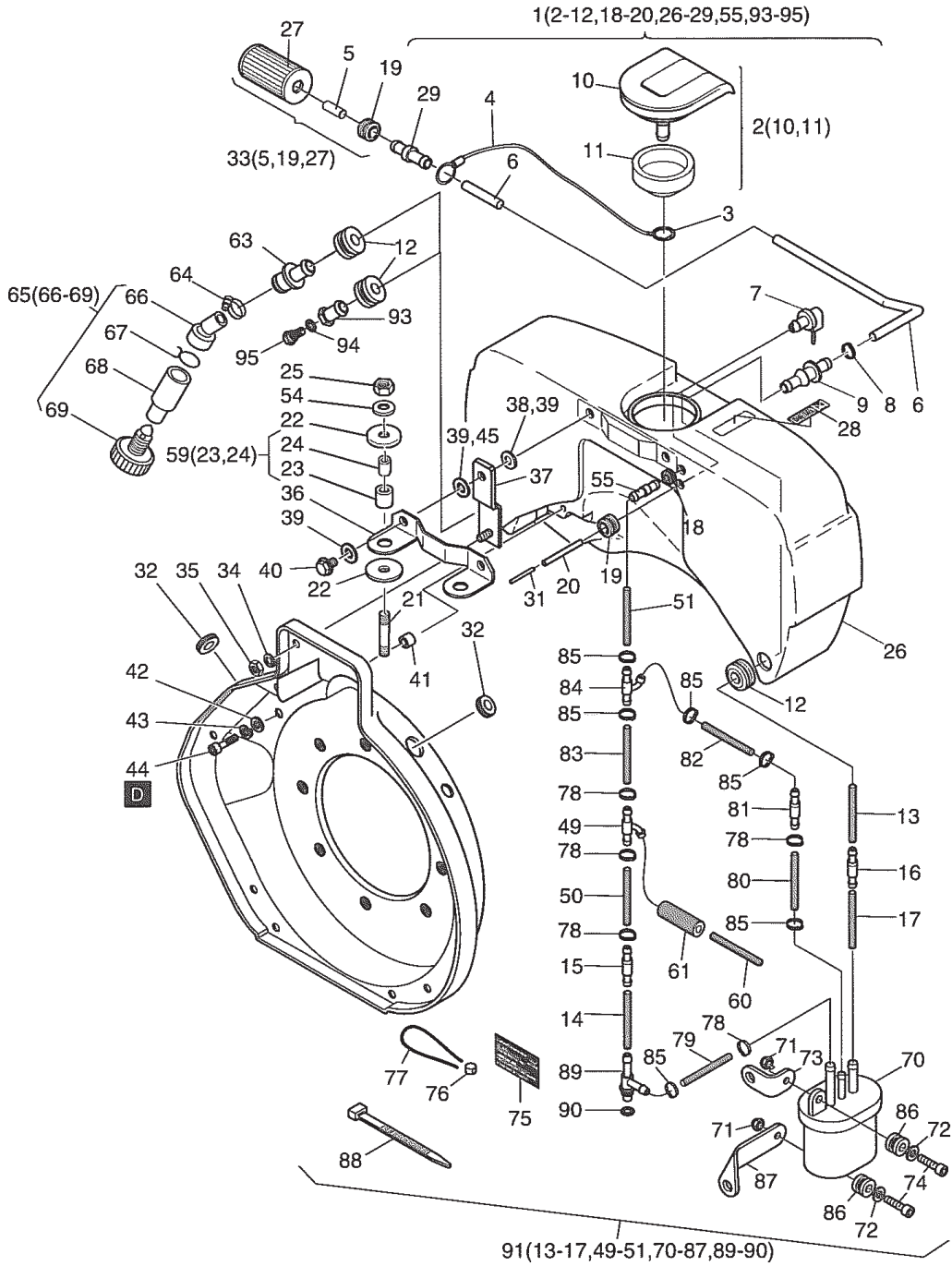
FIG. 1600





SECTION 17 FUEL SYSTEM GROUP

FIG. 1700

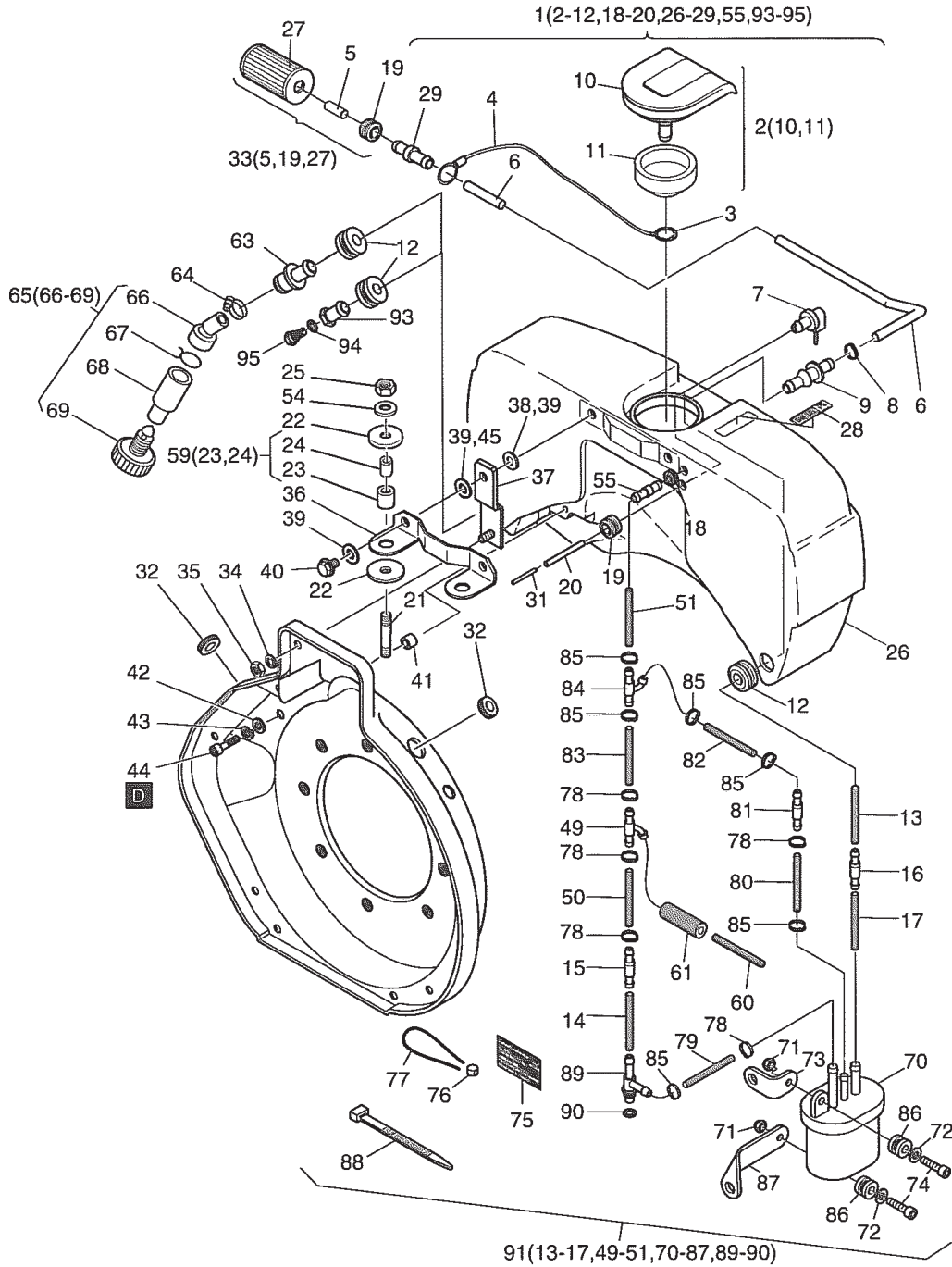


## SECTION 17 FUEL SYSTEM GROUP

REF.	PART NO.	DESCRIPTION	QTY.	REMARKS	FROM-TO	FIG.
1	DH0-18529-00	FUEL TANK 5L F.SEP	1			1700
2	DH0-15353-02	CAP F. FUEL TANK	1			1700
3	DH5-05008-00	CIRCLIP 8	1			1700
4	DH0-16289-00	ROPE	1			1700
6	DH0-51899-00	FUEL HOSE 3,5X300	1			1700
7	DH0-15349-00	FUEL VENT. VALVE	1			1700
8	DH5-03998-01	CLAMP 11,3	1			1700
9	DH0-50840-10	CONNECTING NIPPLE	1			1700
11	DH0-50864-01	GASKET F. FUEL CAP	1			1700
12	DH5-04408-00	RUBBER SLEEVE	2			1700
13	DH0-52840-10	FUEL PIPE 3.5X160	1			1700
14	DH0-51232-00	FUEL HOSE 3,5 / 40	1			1700
15	DH0-15346-01		1			1700
16	DH0-53012-00		1			1700
17	DH0-36637-10	FUEL HOSE	1			1700
18	DH0-51304-00	RUBBER SLEEVE	1			1700
19	DH5-04409-01	RUBBER SLEEVE	2			1700
20	DH0-50856-00	BREATH. HOSE 1X3X85	1			1700
21	DH5-02319-00	STUD M 8X 25	2			1700
22	DH0-51098-10	DISC 8,20X22X2	4			1700
24	DH0-51228-00	INSULATING SLEEVE	2			1700
25	DH4-00284-00	HEX.NUT M 8	2			1700
28	DH0-52356-01		1			1700
29	DH0-51890-01	CONNECTING NIPPLE	1			1700
31	DH0-50855-00	TUBE 2X0,3X 16	1			1700
33	DH0-16352-10	FUEL FILTER	1			1700
34	DH5-01709-00	SPRING WASHER	2			1700
35	DH5-01444-00	HEXAGON NUT M 6	2			1700
36	DH0-51223-00	SUPPORT	1			1700
37	DH0-13313-00	SUPPORT	2			1700
39	DH0-51100-10	DISC 7,1X17,9X2	4			1700
40	DH0-16771-00	HEX SCREW M6X20	2			1700
41	DH0-41188-00	DISC 6,5X13X4,8	4			1700
42	DH5-01445-00	FLAT WASHER 6,4	4			1700
43	DH5-01709-00	SPRING WASHER 6	4			1700
44	DH5-01707-00	ALL.SCR.M 6 X 16	4			1700
45	DH5-01143-00	DISC 6,4	2			1700
49	DH0-51756-01	HOSE NIPPLE T	1			1700
50	DH0-38071-10		1			1700
51	DH0-53069-00		1			1700
54	DH5-01481-00	FLAT WASHER 8,4	2			1700
55	DH0-51844-00	CONNECTING NIPPLE	1			1700
59	DH0-16558-00	INSULATING TUBE	2			1700
60	DH0-52150-00	HOSE 2,5X195	1			1700
61	DH0-52130-10		1			1700
63	DH0-51723-00	CONNECTING NIPPLE	1			1700

SECTION 17 FUEL SYSTEM GROUP

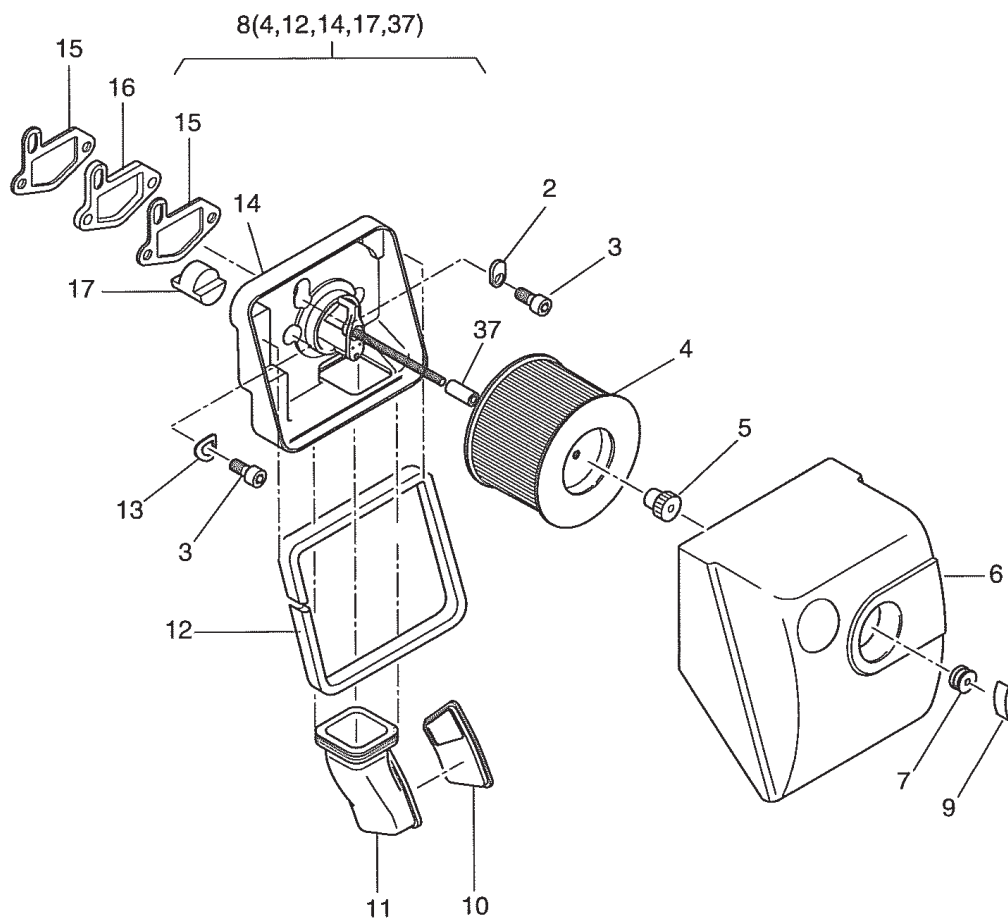
FIG. 1700





SECTION 18 AIR FILTER GROUP

FIG. 1800

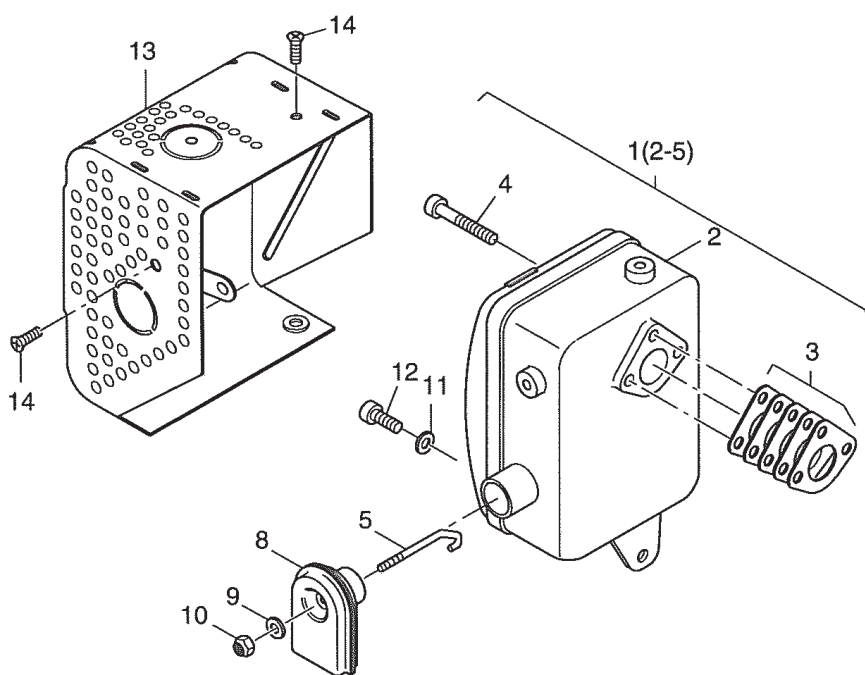






SECTION 19 EXHAUST GROUP

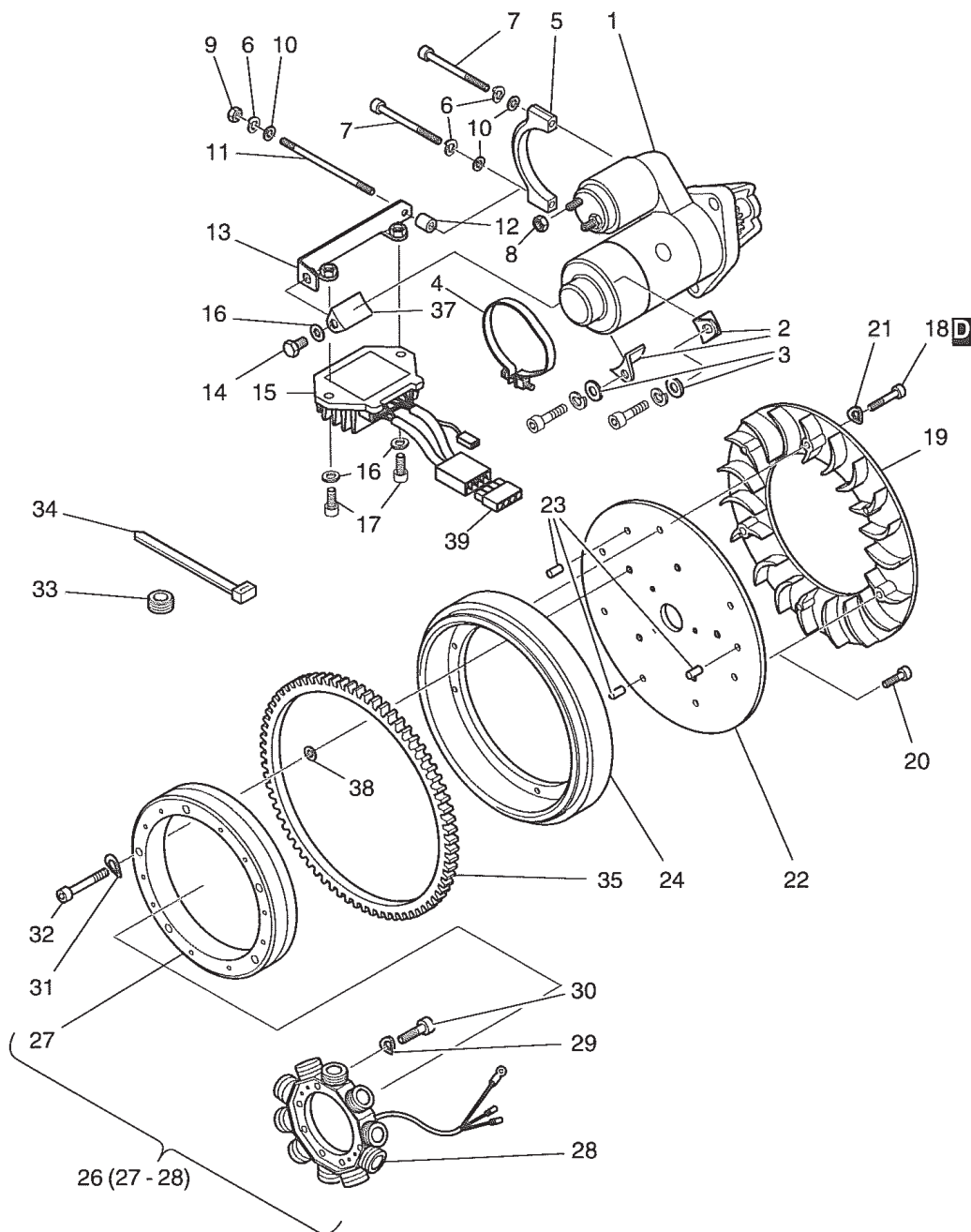
FIG. 1900





# SECTION 20 STARTER, ALTERNATOR GROUP

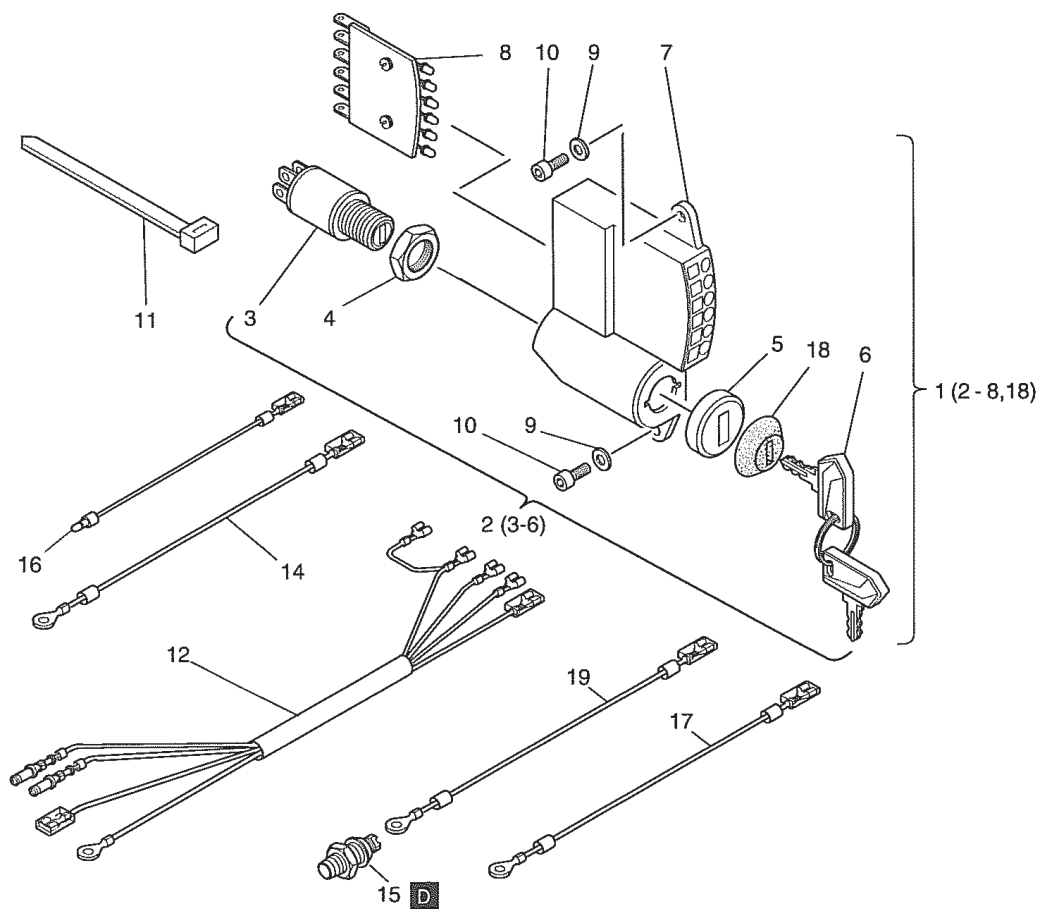
## FIG. 2000





SECTION 21 ELECTRIC GROUP

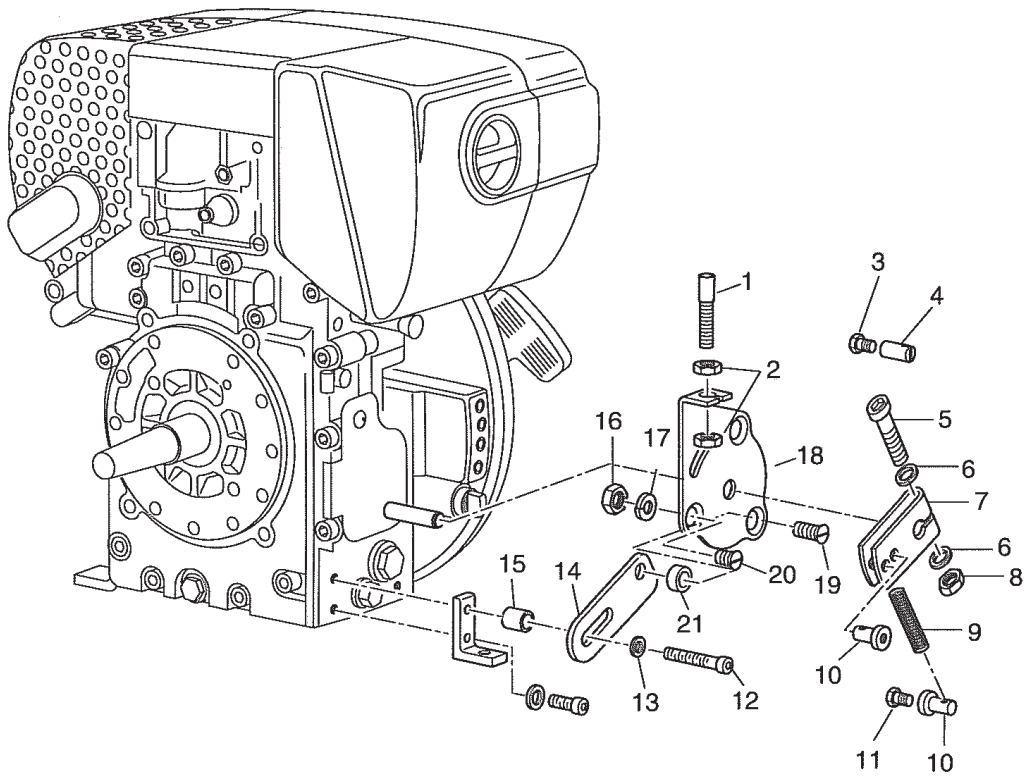
FIG. 2100





SECTION 22 SPEED CONTROL GROUP

FIG. 2200

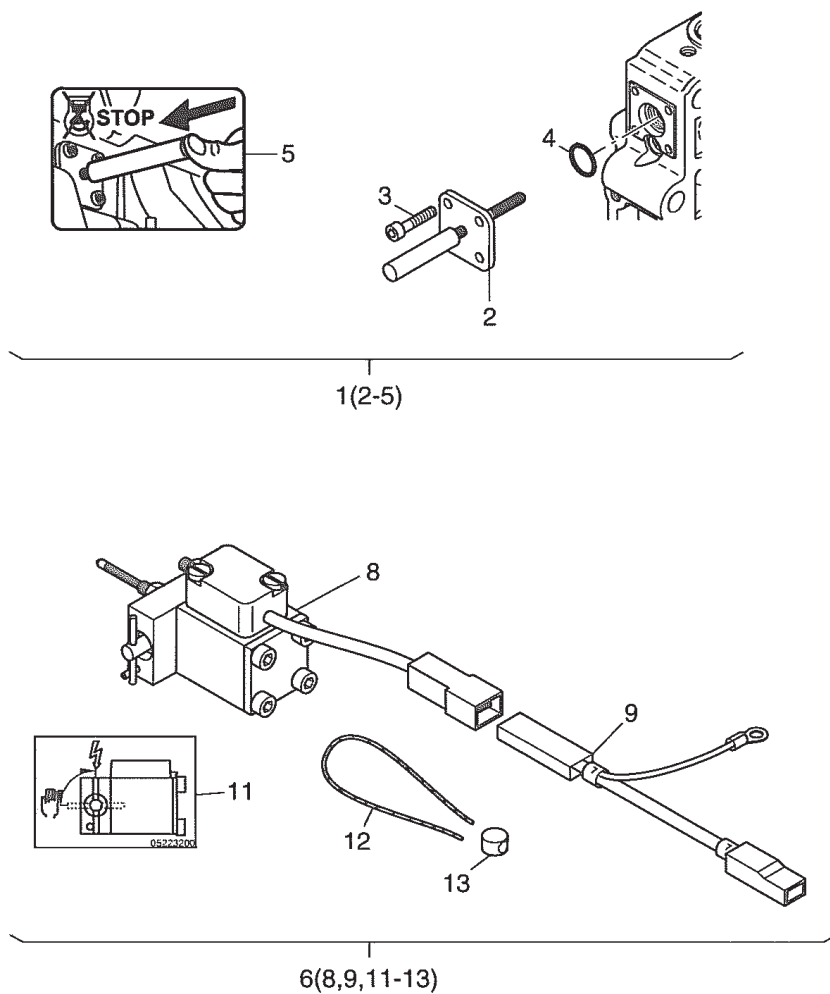






SECTION 23 STOP DEVICE GROUP

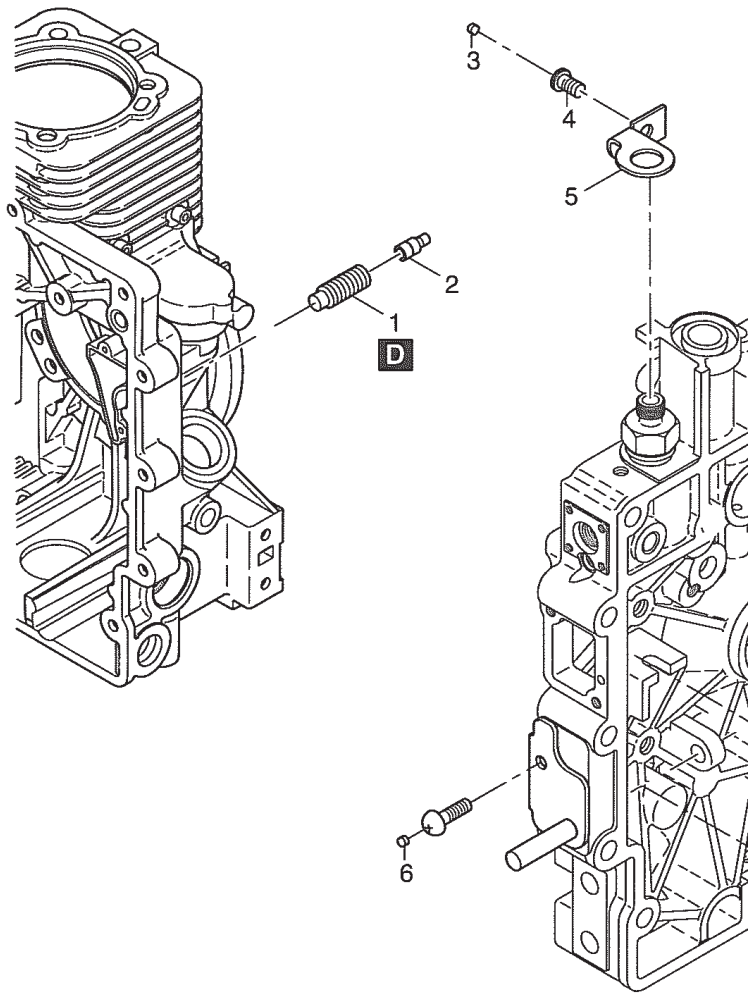
FIG. 2300





SECTION 24 SPEC. EQUIPMENT GROUP

FIG. 2400





PRINTED IN THE USA